

Discover the power of FlowJo™ v11 Software



FlowJo™ v11 Software introduces a wide range of innovative features providing users with an immersive experience for advanced data analysis. The software now allows for a faster analysis of specific populations using hierarchical groups, streamlining your workflow. With built-in algorithms, users can enhance data analysis and visualization with faster performance.

FlowJo™ v11 Software also now enables users to natively visualize BD CellView™ Image Technology data, making it easier to interpret complex datasets. The great news is that with one BD Access Portal (FlowJo Portal) license, you get access to FlowJo™ v10 and v11 Software. FlowJo™ v11 Software allows you to export your data to a FlowJo™ v10 Software workspace and access any tools not yet available in FlowJo™ v11 Software.

Understand the new functions

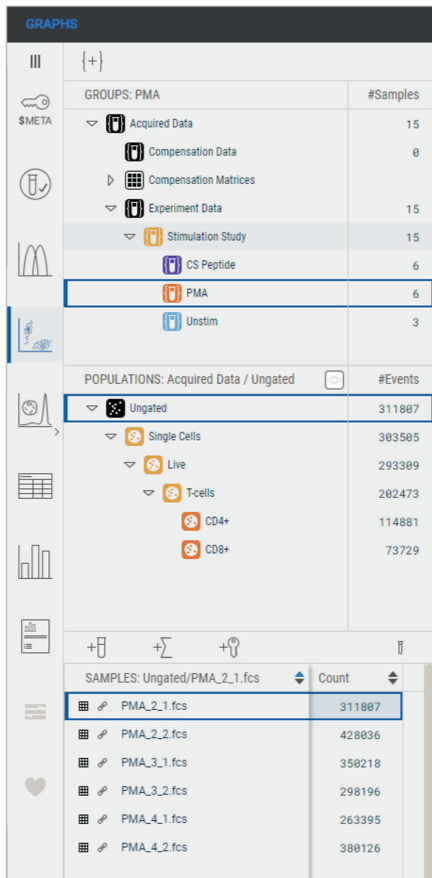
Features	FlowJo™ v10 Software	FlowJo™ v11 Software
Mac and Windows compatible	✓	✓
Graphical user interface with interactive samples	✓	✓
Grouping functionality	✓	✓
Hierarchical grouping		✓
Manual gating	✓	✓
Basic statistics	✓	✓
Batch processing by sample	✓	✓
Batch processing by population		✓
Summary plots (bar, pie)		✓
Templates	✓	
Page-based reports		✓
Parameter sets		✓
Export report as images (jpeg, tiff, svg)	✓	
Full suite of compensation and unmixing tools	✓	✓
Unmixing matrix correction		✓
QC tools	As Plugin	✓
Models (Kinetics, Proliferation, Cell cycle)	✓	
Comparative statistics		✓
Parameter math	✓	
File concatenation	✓	
Virtual concatenation		✓
X-Shift	As Plugin	✓
tSNE	✓	✓
Dimensionality reduction with downsampling and upsampling		✓



Explore the new key features in FlowJo™ v11 Software

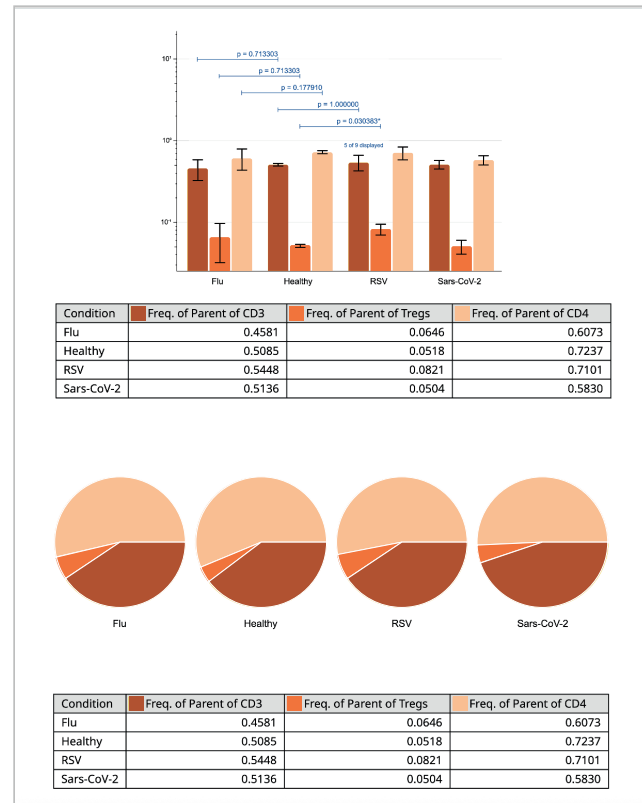
Hierarchical grouping

Hierarchical groups mirror experimental design, allowing for common populations to be passed down the hierarchy to various categories of data, making comparisons the natural end point of working through the data.



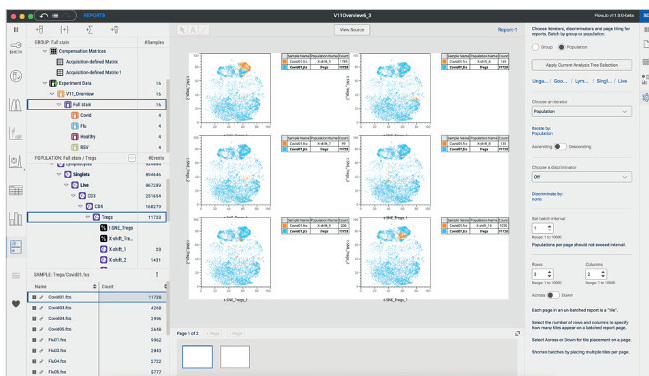
Summary plots (bar or pie chart) and comparative statistics

After creating a table, the charts tool can be used to create a visualization of that table that tells the data story in a visual, easy to interpret manner. Comparative statistics reveal the strength of your insights, without moving to another software.



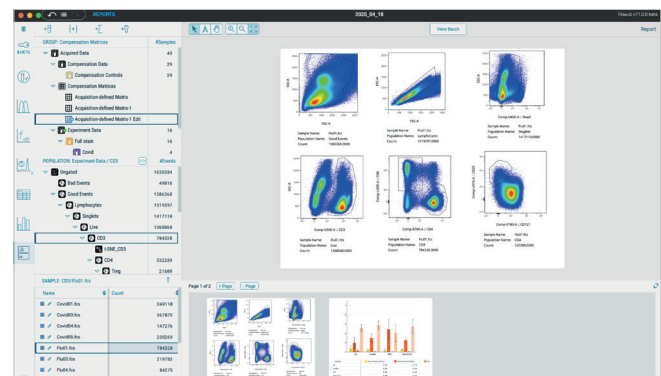
Batch processing by population

Create reports by overlaying a unique population on different samples, or iterate your batching by population instead of samples, simplifying the analysis of high-dimensional data.



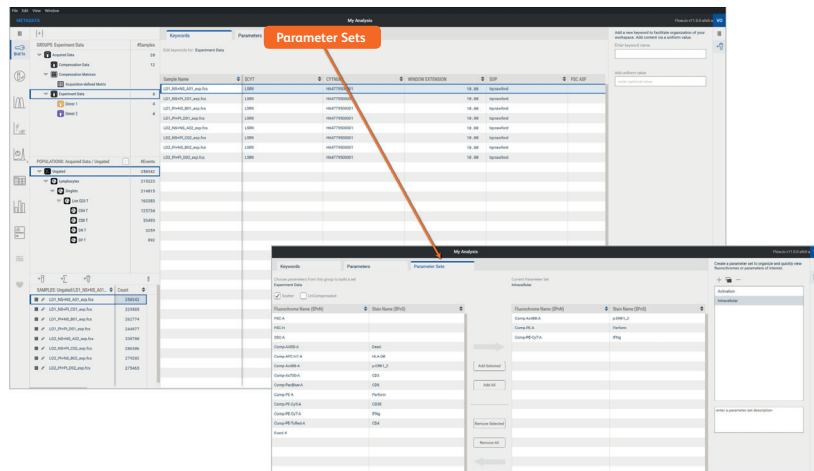
Page reports

Multiple pages can be added to a report, each with specific graphics including plots, charts or tables. You can define if batching includes all pages or just some of them for the ultimate in flexibility.



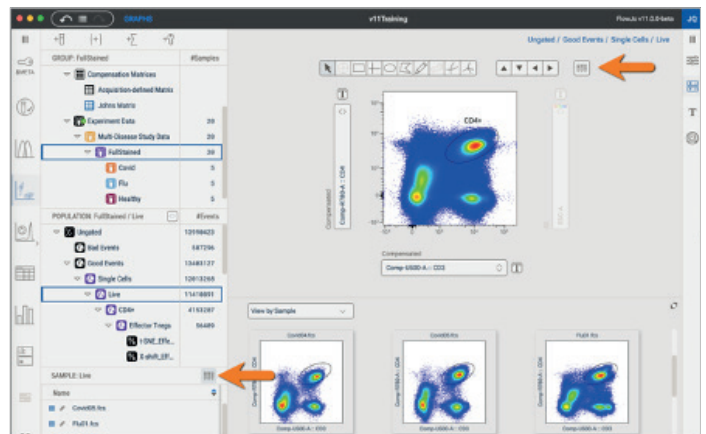
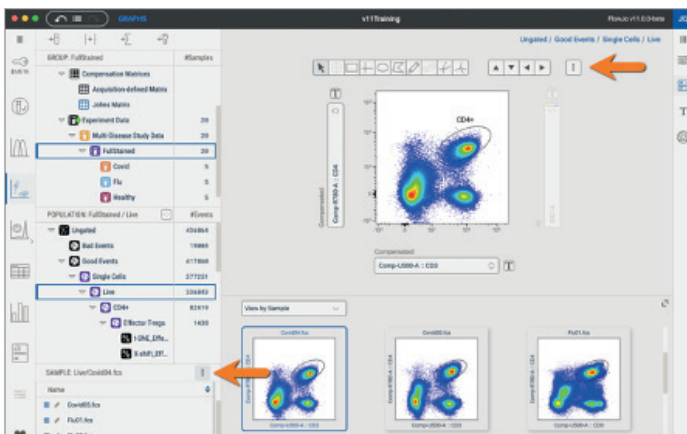
Metadata manager

View and edit existing metadata or create new metadata for clearer annotations. The metadata manager now allows you to create custom sets of parameters that appear throughout the program. These parameter sets can filter axis choices and display settings, simplifying your analysis and eliminating unwanted parameters.



Virtual concatenation

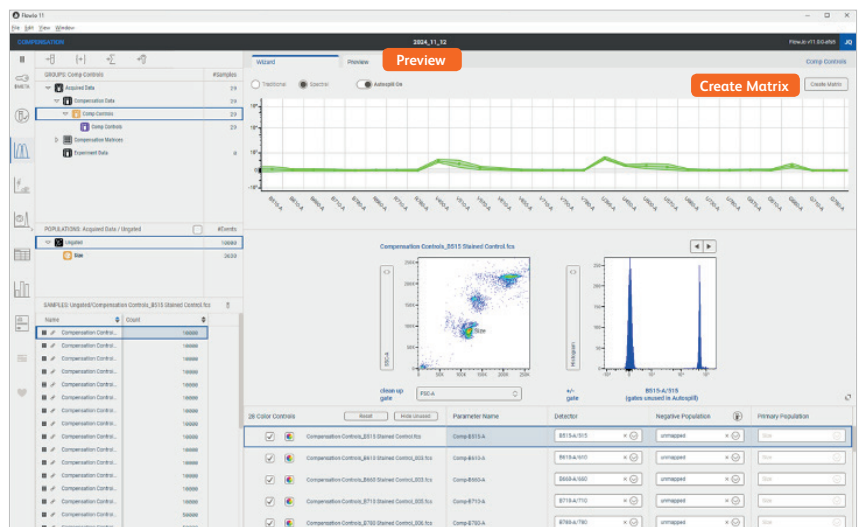
Virtually Concatenated Populations (VCPs) allow you to draw gates, run clustering algorithms, or perform visual comparison on all data within a group on the fly, without needing to create additional files, or add extra annotation.

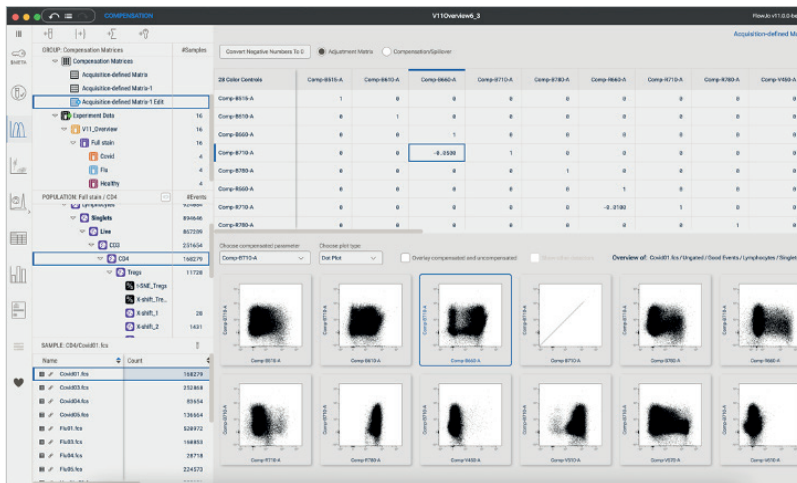


Compensation matrix

The Compensation Wizard in FlowJo™ v11 Software enables you to create a spillover matrix largely automatically, offering more control compared to fully automatic unmixing.

The Compensation Wizard will automatically assign single stain controls to detectors, create clean-up gates, create positive and negative gates and identify universal negatives. It will also pause in the calculation to allow you, the expert, to make any corrections you deem necessary before proceeding to either creating or previewing the spillover matrix.



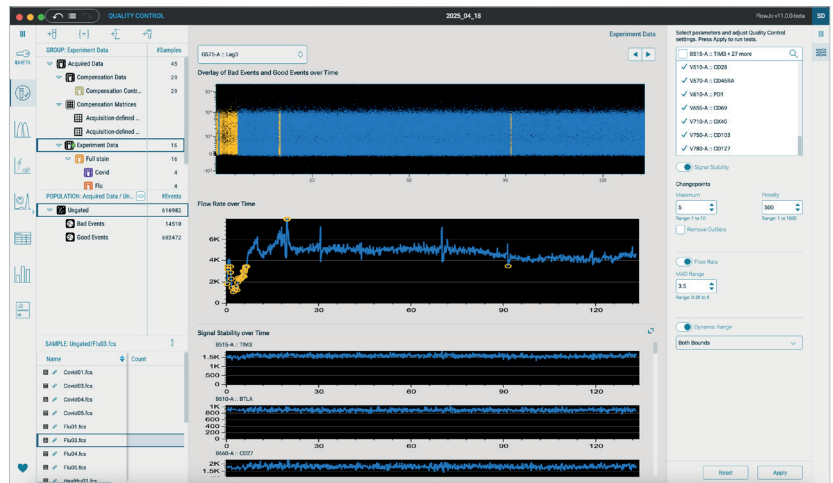


Correct pairs of parameters in the new Compensation Wizard

With the correction matrix tool, a spillover matrix can be modified by applying a correction to a pair of parameters rather than a parameter detector combination, making it particularly useful for spectral matrices.

Built-in features

FlowJo™ v11 Software natively offers features that require plugin install and setup in FlowJo™ v10 Software such as Quality Control, XShift or Image Parameter Adjustments.



To learn more about FlowJo™ v11 Software, check out the resources at flowjo.com

Other Resources:

- FlowJo University: flowjo.com/learn/flowjo-university
- Webinars: flowjo.com/learn/webinars
- Documentation: flowjo.com/docs/flowjo11
- Start a free trial: flowjo.com/flowjo/free-trial
- Download at: flowjo.com/flowjo/download
- Technical support: flowjo@bd.com
- Newsletter: flowjo.com/newsletter

For Research Use Only. Not for use in diagnostic or therapeutic procedures.

BD Life Sciences, Milpitas, CA, 95131, U.S.

bdbiosciences.com

BD, the BD Logo, BD CellView and FlowJo are trademarks of Becton, Dickinson and Company or its affiliates.

© 2025 BD. All rights reserved. BD-147866 (v1.0) 0425

