

FlowJo™ Software v10.10

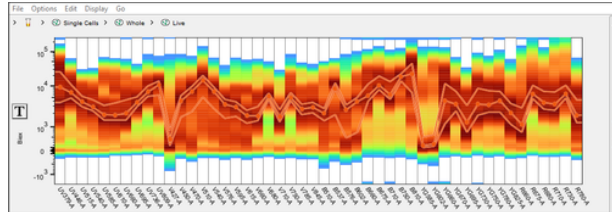
New tools and features

Spectral plots

Interactive viewer for spectral plots

Spectral population viewer

Compare populations using spectral plots



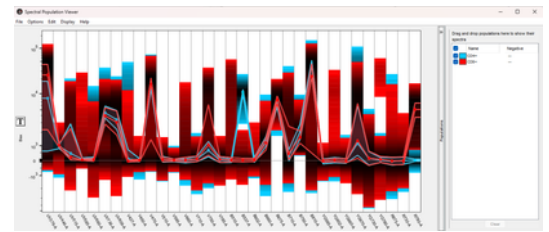
Spectral plots

Advanced scaling preferences

Define data-driven, per-cytometer scaling defaults to more easily set transform properties.

Built-in ClusterExplorer—added functionality

- Non-cluster populations can now be visualized in ClusterExplorer
- Clusters can be re-ordered within the heat map view.
- Heatmap columns can be re-ordered or hidden



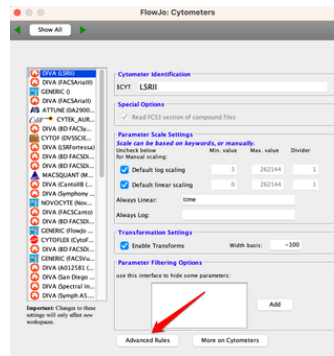
Spectral population viewer

Table creation for Marker Enrichment Modeling (MEM) scores

Export MEM population names in a tabular format

Copy transforms

Copy transforms from one sample to another, allowing per parameter transforms to be easily applied to another data set.



Advanced scaling preferences



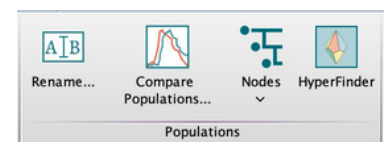
ClusterExplorer visualization tools

Hyperfinder

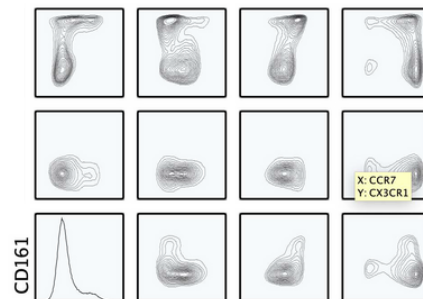
Define populations identified by a computational approach with standard gates so that they might be sorted.

NxN plot parameter mouseover

Display parameter combinations on NxN plots for easier viewing.



Native Hyperfinder



NxN plots mouseover

For Research Use Only. Not for use in diagnostic or therapeutic procedures.

BD and FlowJo are one. Supporting you and your research from design to discovery.

BD Life Sciences, Milpitas, CA, 95035, U.S.

FlowJo, Ashland, OR, 97520, U.S.

541.201.0022

bdbiosciences.com

BD, the BD Logo, BD FACSDiscover, FlowJo and SpectralFX are trademarks of Becton, Dickinson and Company or its affiliates. © 2023 BD. All rights reserved. NPM-2818 (v1.0) 1123

